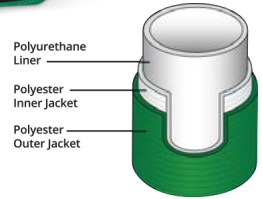


# 8T

## LIGHTWEIGHT POLYESTER DOUBLE JACKET HOSE



Our 8T has the same jacket construction as an 8D in that it is made with two jackets of tightly woven polyester but is lined with polyurethane which is lighter and packs tighter than 8D. The polyurethane liner material meets NSF Standard 61 for potable water use and can be used as a hydrant or water main bypass in an emergency situation.

### FEATURES AND BENEFITS

- High quality, double jacket, municipal fire hose made from 100% high tensile strength polyester yarn along with a lining of thermoplastic polyurethane for reduced weight while remaining kink resistant.
- Reverse twill weave of the inner jacket provides a smooth waterway and superior lining adhesion, superceded only by Ponn Conquest.
- Remains flexible to temperatures as low as -20F (-29C) and is resistant to ozone, oxidation, and most chemicals and petrochemicals.
- Polyurethane lining material meets National Sanitation Foundation (NSF) Standard 61 for drinking water.
- Manufactured in accordance with NFPA 1961 standard, latest edition within our ISO-9001:2015 certified quality assurance system.

### CONSTRUCTION

Polyester Double Jacket  
Polyurethane Inner Liner

### TEMPERATURE

-20°F to 200°F (-29°C to 95°C)

### COUPLINGS

Aluminum or brass NH/NST or IPT Threaded, Aluminum Storz

### COLORS



WOVEN DOUBLE JACKET

| SIZE   | SERVICE TEST | PROOF TEST | BURST       | WEIGHT (50' Coupled) | BOWL SIZE |
|--------|--------------|------------|-------------|----------------------|-----------|
| IN     | PSI (kPa)    | PSI (kPa)  | PSI (kPa)   | LBS (KG)             | IN        |
| 1 1/2" | 400 (2760)   | 800 (5515) | 1200 (8275) | 14 (6.4)             | 1 1/16"   |
| 1 3/4" | 400 (2760)   | 800 (5515) | 1200 (8275) | 16 (7.3)             | 2 3/16"   |
| 2 1/2" | 400 (2760)   | 800 (5515) | 1200 (8275) | 25 (11.3)            | 3"        |
| 3"     | 400 (2760)   | 800 (5515) | 1200 (8275) | 36 (16.3)            | 3 9/16"   |

| TYPE | HOSE I.D.  | HOSE LENGTH            | COLOR   | COUPLING SIZE                         | THREAD TYPE       | COUPLING MATERIAL  |
|------|--|------------------------|---|---------------------------------------|-------------------|--|
| 8T   | 15 = 1 1/2"<br>17 = 1 3/4"<br>25 = 2 1/2"<br>30 = 3" | 50 = 50'<br>100 = 100' | Y = Yellow<br>R = Red<br>B = Blue<br>O = Orange<br>G = Green<br>T = Tan<br>C = White *coated<br>W = White *uncoated | 15 = 1 1/2"<br>25 = 2 1/2"<br>30 = 3" | N = NH<br>I = IPT | Blank = Aluminum<br>BR = Brass Rocker Lug (1 1/2" and 2 1/2" only) |