

# 8D



**Snap-Tite**  
HOSE



## POLYESTER DOUBLE JACKET ATTACK HOSE

Our 8D is a municipal grade double jacket hose with a lightweight EPDM rubber liner that meets all the requirements of NFPA 1961. It is designed for use as an attack handline hose and is manufactured to a service test pressure of 400 psi (2758 kPa) to handle all fireground challenges with ease.



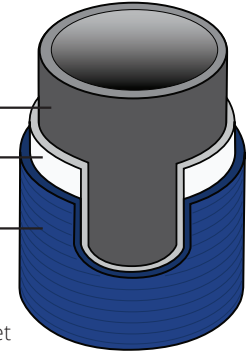
### FEATURES:

- Exceptional quality, double jacket, rubber lined municipal fire hose made from 100% high tensile strength ring-spun polyester yarn with a lining of extruded EPDM.
- Optional Dura-Cote™ treatment greatly increases abrasion, heat, flame and petrochemical resistance while virtually eliminating water pick-up. When treated, 8D is protected from mildew and no drying is required.
- Hose remains flexible to temperatures as low as -40°F (-40°C) and is highly resistant to ozone and oxidation.
- Manufactured in accordance with NFPA 1961 Standard, latest edition within our ISO-9001:2015 certified quality assurance system.



USA MADE

EPDM  
Rubber Liner  
Polyester  
Inner Jacket  
Polyester  
Outer Jacket



### CONSTRUCTION

Polyester Double Jacket  
EPDM Rubber Inner Linner

### TEMPERATURE RANGE

-40°F to 150°F (-40°C to 66°C)

### COUPLINGS

Aluminum NH/NST or IPT Threaded

### COLORS



## HOSE SIZING AND SPECIFICATIONS

SIZE	SERVICE TEST	PROOF TEST	BURST	WEIGHT (FOR 50' COUPLED)	FLAT WIDTH	ID*	BOWL SIZE	CERTIFICATION AVAILABLE
IN	PSI (kPa)	PSI (kPa)	PSI (kPa)	LBS (KG)	IN	IN	IN	
1"	400 (2758)	800 (5516)	1200 (8274)	13 (5.9)	2.10"	1.20"	1 1/2"	
1 1/2"	400 (2758)	800 (5516)	1200 (8274)	15 (6.8)	2.80"	1.60"	1 15/16"	
1 3/4"	400 (2758)	800 (5516)	1200 (8274)	18 (8.2)	3.20"	1.80"	2 1/8"	ULC
2"	400 (2758)	800 (5516)	1200 (8274)	20 (9.1)	3.70"	2.10"	2 1/2"	
2 1/2"	400 (2758)	800 (5516)	1200 (8274)	27 (12.2)	4.50"	2.58"	3"	ULC
3"	400 (2758)	800 (5516)	1200 (8274)	33 (15)	5.30"	3.15"	3 9/16"	

\*ID values derived from product specification with allowable manufacturing tolerances. For specific ID tolerance range for products please contact [engsupport@snaptitehose.com](mailto:engsupport@snaptitehose.com)

As per NFPA 1961 – The service test pressure is to be 10% greater than the “normal highest operating pressure” at which the hose is expected to be used.

## HOW TO ORDER

TYPE	HOSE ID	BY	HOSE LENGTH	COLOR	COUPLING SIZE	THREAD TYPE	COUPLING MATERIAL	OPTIONS
8D	10 = 1" 15 = 1 1/2" 17 = 1 3/4" 20 = 2" 25 = 2 1/2" 30 = 3"	X	50 = 50' 100 = 100'	Y = Yellow R = Red B = Blue O = Orange G = Green T = Tan C = White (coated) W = White (uncoated)	10 = 1" 15 = 1 1/2" 20 = 2" 25 = 2 1/2" 30 = 3"	N = NH I = IPT	Blank = (Aluminum)	ULC = UL Canada Labeled

Part No. Example: **8D17X50B15N** = 8D Hose, 1 3/4" ID by 50' Length, Blue, 1 1/2" NH/NST Aluminum Coupling



[www.snaptitehose.com](http://www.snaptitehose.com)  
814-438-7616  
UPDATED 10/15/22